

# PROGRESS REPORT I

February 2026

Architectural & Infrastructure  
Progress Overview



# PROGRESS REPORT | February 2026

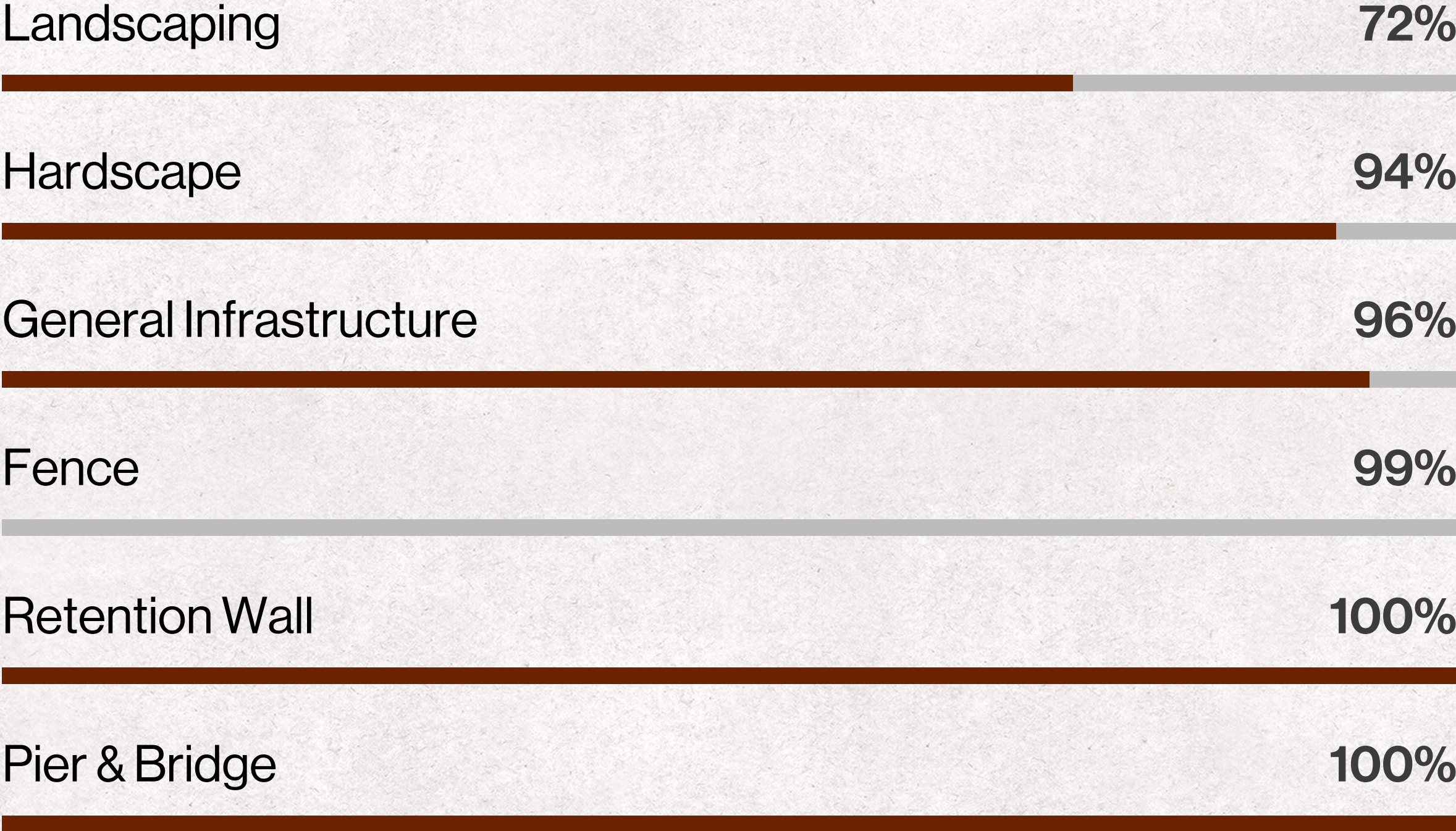


February 2026 saw continued steady progress across the project, with architectural works advancing in multiple villas and further development of infrastructure, hardscape, and landscaping. Several villas moved closer to advanced completion stages, while external works continued to support the overall readiness of the community environment.

Construction activities during the month focused on architectural finishing, coordination with engineering systems, and integration with surrounding infrastructure and landscape works



# PROGRESS REPORT | February 2026



# Key Achievements / February 2026

## Continued Architectural Progress Across All Series

Architectural works advanced steadily across A-, B-, and C-Series villas, with several villas entering advanced finishing stages.

## Infrastructure and Hardscape Nearing Completion

Infrastructure works reached 96%, while hardscape progressed to a similar level, focusing on final alignment of roads, pathways, and outdoor spaces.

## Landscaping Expansion Across the Project

Landscape works advanced significantly, shaping the visual environment of the community and integrating villas with surrounding green areas.

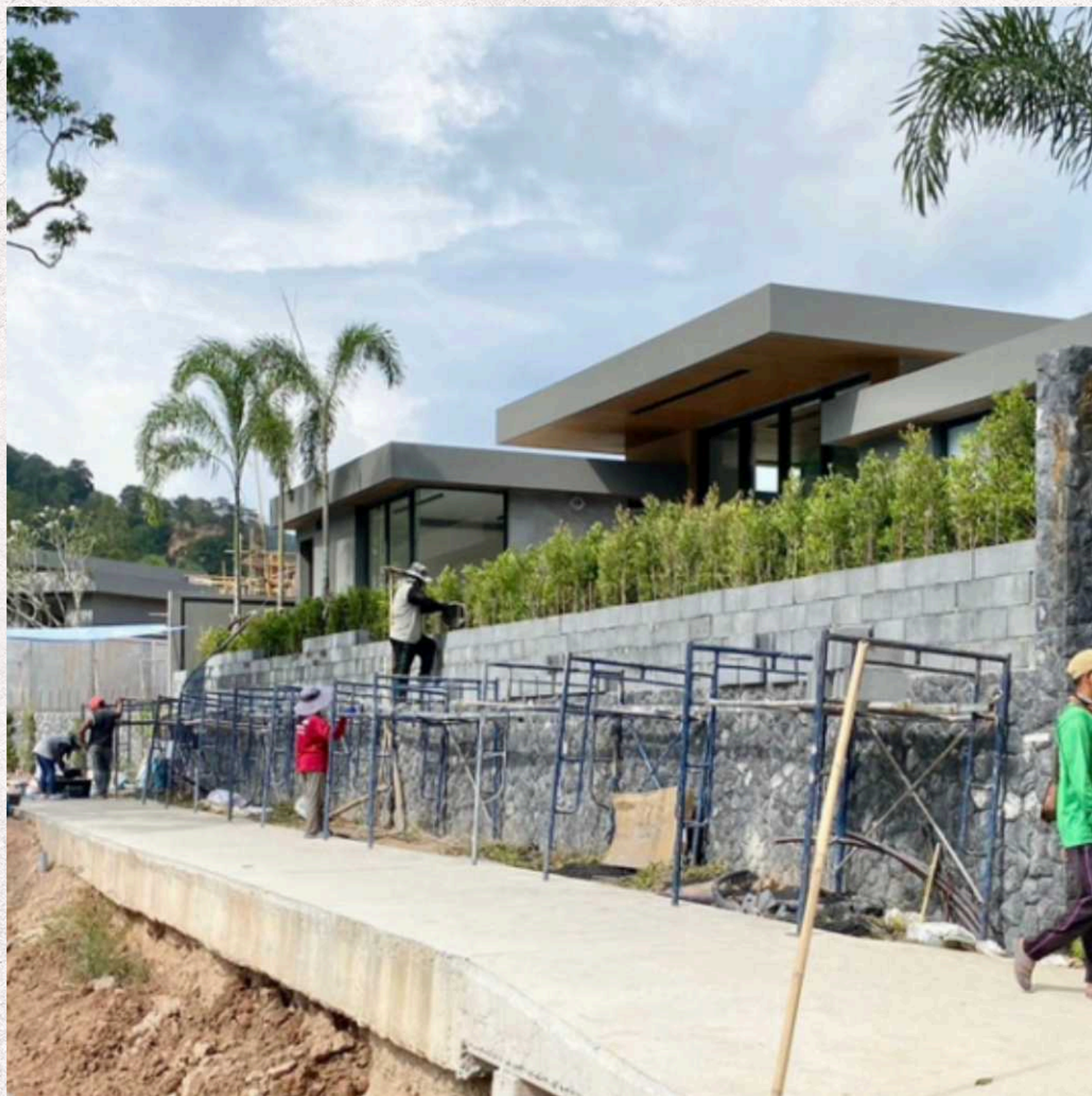
## Advanced Stage of Several Villas

Multiple villas within B-Series and C-Series continued progressing toward final architectural completion.

## Show Villas Maintaining Final Readiness

Show villas remain in near-complete condition, requiring only minor finishing and maintenance works.

# Public Areas & Infrastructure / February 2026



Public infrastructure works continued approaching final completion, with most structural elements already finalized and current efforts focused on surface finishing, integration with landscaping, and preparation for final project presentation.

---

General Infrastructure	<b>93% → 96%</b>
------------------------	------------------

---

Hardscape	<b>91% → 94%</b>
-----------	------------------

---

Retention Wall	<b>100%</b>
----------------	-------------

---

Pier & Bridge	<b>100%</b>
---------------	-------------

---

Fence (Plots A & C)	<b>99%</b>
---------------------	------------

---

Landscaping	<b>58% → 72%</b>
-------------	------------------

---

# Structural Works (ST)

February 2026



Structural works during February continued primarily for newly released villas and future construction phases.

Villa	Status
C04	25% → 30%
A09	40% → 45%
D01 & D02*	5%

These works ensure continued expansion of the construction pipeline for upcoming architectural stages.

# Architectural Works (AR)

## (Architectural Initiation Phase)

### A-SERIES VILLAS



Villa	Status
A02	54% → 60%
A04	55% → 60%
A06	50% → 55%
A08	42% → 50%
A10	50% → 55%

Architectural works in A-Series focused on interior finishing, facade development, and coordination of engineering systems.

# Architectural Works (AR)



## B-SERIES VILLAS

Villa	Status
B06	89% → 90%
B09	89% → 92%
B05	70% → 85%
B08	70% → 83%
B04	70% → 78%
B03	82% → 90%
B01	70% → 80%
B02	70% → 85%
B07	70% → 85%

Several B-Series villas are now in advanced finishing stages, with architectural detailing and coordination with external works ongoing.

# Architectural Works (AR)



## C-SERIES VILLAS

Villa	Status
C05	99%
C01	82% → 85%
C02	69%
C03	99%

C-Series villas continue to progress steadily, with Villa C03 effectively complete pending final detailing and Villa C05 entering its final finishing phase.

# Show Units / February 2026



Show Villa	Status
Show Villa A11	99%
Show Villa C05	99%

Both show villas remain in a near-complete state and are maintained at presentation level, requiring only minor finishing adjustments and routine maintenance.